

Doghandlers Subcommittee



The nose-the dog`s incredible olfactory organ



Meier Marcel, Alpine Rescue Switzerland

The nose-the dog`s incredible olfactory organ

How the dog's incredible nose works





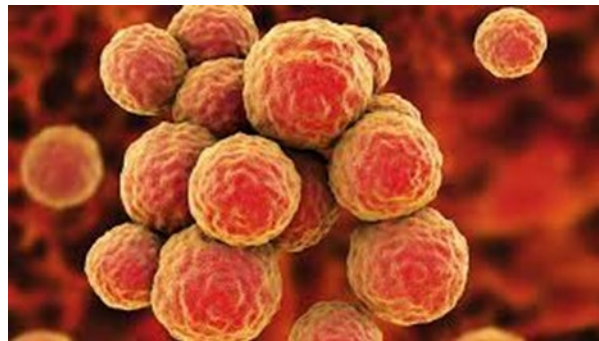
The nose-the dog`s incredible olfactory organ

How the dog's incredible nose works

https://www.youtube.com/watch?v=p7fXa2Occ_
[U](#)

The nose-the dog`s incredible olfactory organ

Recognize the individual smell of the person



With the millions and millions of bacteria-laden skin flakes that we constantly shed and the glandular secretions that are released into the air from the surface of our bodies, we leave behind a characteristic cloud of scent that must act like a beacon for our dogs.

The nose-the dog`s incredible olfactory organ



Recognize the individual smell of the person



The butyric acid, uric acid and acetic acid contained in the olfactory cells are the main factors that guide the dog, as it is a master at recognizing these special fatty acids.

The nose-the dog`s incredible olfactory organ

Recognize the individual smell of the person



Scent of the dog owner



Scent of the twin brother

The master's scent is unique. If two are riding together, he recognizes the master's scent. Even if you have an identical twin brother who eats differently, the dog recognizes the master's scent.

The nose-the dog`s incredible olfactory organ

Recognize the individual smell of the person



We strip off 10,000 odor cells per hour



alamy

Image © iStockphoto
www.istockphoto.com

40 million odorous skin cells throughout the day

The nose-the dog`s incredible olfactory organ



Make the nose training varied



The nose-the dog`s incredible olfactory organ

Two examples of excellent nose work with dogs

Missing person was found after 7 days under an avalanche with the dog. Search time was 5 minutes.



The nose-the dog`s incredible olfactory organ

Two examples of excellent nose work with dogs

Missing person was found after 7 days under an avalanche with the dog.
Search time was 5 minutes.



The odor-intensive skin cells remain in the snow. This makes them smell much longer and more intense for the dog.

The nose-the dog`s incredible olfactory organ

Two examples of excellent nose work with dogs

Search on the water



<https://www.youtube.com/watch?v=XPluctLY8Y4>

The nose-the dog`s incredible olfactory organ



The nose-the dog`s incredible olfactory

